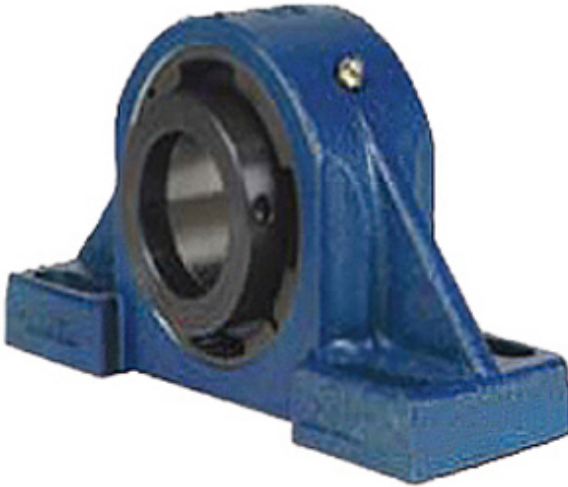




# GARLOCK BEARINGS LTD



3.346 Inch | 85 Millimeter x 4.63 Inch | 117.602  
 Millimeter x 4 Inch | 101.6 Millimeter QM  
 INDUSTRIES QVVPX19V085ST Pillow Block  
 Bearings

Bearing No. QVVPX19V085ST

QVVPX19V085ST Bearing 2D drawings and 3D CAD  
 models

|                           |  |
|---------------------------|--|
| Category                  | Pillow Block Bearings  |
| Inventory                 | 0.0  |
| Manufacturer Name         | TIMKEN   |
| Minimum Buy Quantity      | N/A  |
| Weight                    | 19.522   |
| EAN                       | 0883450371827  |
| Product Group             | M06288   |
| Number of Mounting Holes  | 4  |
| Mounting Method           | V Lock   |
| Housing Style             | 4 Bolt Pillow Block  |
| Rolling Element           | Spherical Roller Bearing   |
| Housing Material          | Cast Steel   |
| Expansion / Non-expansion | Non-expansion  |
| Mounting Bolts            | 20 Millimeter  |
| Relubricatable            | Yes  |
| Insert Part Number        | 22219  |
| Seals                     | Teflon Labyrinth   |
| Housing Configuration     | 1 Piece Solid  |
| Inch - Metric             | Metric   |
| Other Features            | Double Row   Double Nut  |
| Long Description          | 4 Bolt Pillow Block; 85MM Bore; 101.6MM Base to Center Height; V Lock Mount; Spherical Roller Bearing; 274.6MM |



## GARLOCK BEARINGS LTD

|                               |  |
|-------------------------------|--|
|                               | Minimum Bolt Spacing;<br>309.6MM Bolt Spacing<br>Maximum; Relubricatable;<br>Cast Steel; Teflon La |
| Category                      | Pillow Block   |
| UNSPSC                        | 31171511   |
| Harmonized Tariff Code        | 8483.20.40.80  |
| Noun                          | Bearing  |
| Keyword String                | Pillow Block   |
| Manufacturer URL              | <a href="http://www.qmbearings.com">http://www.qmbearings.com</a>                                  |
| Manufacturer Item Number      | QVVPX19V085ST  |
| Weight / LBS                  | 49   |
| d                             | 3.346 Inch   85 Millimeter   |
| Nominal Bolt Center to Center | 11.5 Inch   292.1 Millimeter   |
| B                             | 4 Inch   101.6 Millimeter  |
| Bolt Spacing Maximum          | 12.189 Inch  <br>309.6Millimeter   |
| D                             | 4.63 Inch   117.602<br>Millimeter  |
| Bolt Spacing Minimum          | 10.811 Inch  <br>274.6Millimeter   |
| Actual Bolt Center to Center  | 0 Inch   0Millimeter   |