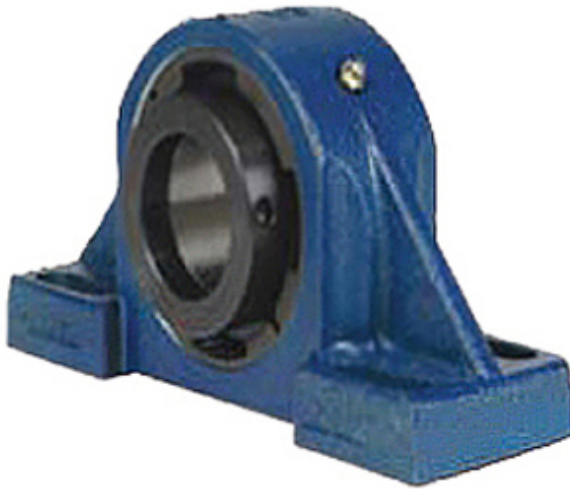




GARLOCK BEARINGS LTD

3.938 Inch | 100.025 Millimeter x 4.59 Inch |
 116.586 Millimeter x 4.25 Inch | 107.95 Millimeter
 QM INDUSTRIES QAPF20A315SEB Pillow
 Block Bearings



Bearing No. QAPF20A315SEB

QAPF20A315SEB Bearing 2D drawings and 3D CAD models

Category	Pillow Block Bearings
Inventory	0.0
Manufacturer Name	TIMKEN
Minimum Buy Quantity	N/A
Weight	25.878
EAN	0883450046732
Product Group	M06288
Number of Mounting Holes	4
Mounting Method	Concentric Collar
Housing Style	4 Bolt Pillow Block
Rolling Element	Spherical Roller Bearing
Housing Material	Cast Steel
Expansion / Non-expansion	Expansion
Mounting Bolts	3/4 Inch
Relubricatable	Yes
Insert Part Number	22220
Seals	Double Lip Nitrile Rubber
Housing Configuration	1 Piece Solid
Inch - Metric	Inch
Other Features	Double Row Single Collar With Set Screw
Long Description	4 Bolt Pillow Block; 3-15/16" Bore; 4-1/4" Base to Center Height; Concentric Collar Mount;



GARLOCK BEARINGS LTD

	Spherical Roller Bearing; 10-7/8" Minimum Bolt Spacing; 13.38" Bolt Spacing Maximum; Relu
Category	Pillow Block
UNSPSC	31171511
Harmonized Tariff Code	8483.20.40.80
Noun	Bearing
Keyword String	Pillow Block
Manufacturer URL	http://www.qmbearings.com
Manufacturer Item Number	QAPF20A315SEB
Weight / LBS	67
D	4.59 Inch 116.586 Millimeter
d	3.938 Inch 100.025 Millimeter
B	4.25 Inch 107.95 Millimeter
Bolt Spacing Minimum	10.875 Inch 276.225Millimeter
Bolt Spacing Maximum	13.38 Inch 339.852Millimeter
Nominal Bolt Center to Center	12.5 Inch 317.5 Millimeter
Actual Bolt Center to Center	0 Inch 0Millimeter