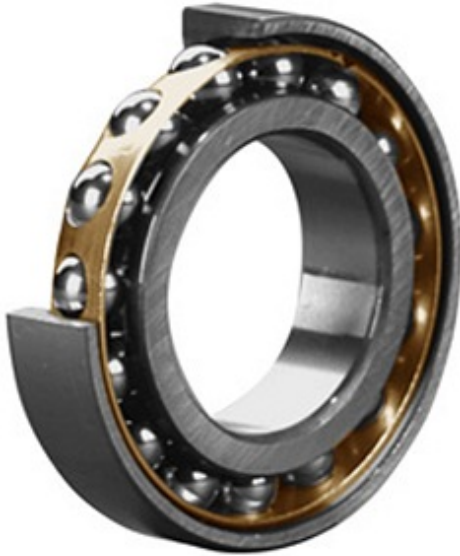




GARLOCK BEARINGS LTD



7056 MG Bearing 2D drawings and 3D CAD models

11.024 Inch | 280 Millimeter x 16.535 Inch | 420 Millimeter x 2.559 Inch | 65 Millimeter
CONSOLIDATED BEARING 7056 MG Angular Contact Ball Bearings

Bearing No. 7056 MG

Category	Angular Contact Ball Bearings
Inventory	0.0
Manufacturer Name	CONSOLIDATED BEARING
Minimum Buy Quantity	N/A
Weight	31.63
EAN	0644075150613
Product Group	B00308
Enclosure	Open
Flush Ground	Yes
Rolling Element	Ball Bearing
Number of Rows of Balls	Single Row
Precision Class	ABEC 1 ISO P0
Maximum Capacity / Filling Slot	No
Snap Ring	No
Cage Material	Bronze
Contact Angle	30 Degree
Internal Clearance	C0-Medium
Number of Bearings	1 (Single)
Mounting Arrangement	Universal
Inch - Metric	Metric
Long Description	280MM Bore; 420MM Outside Diameter; 65MM



GARLOCK BEARINGS LTD

	Width; Open; Yes Flush Ground; Ball Bearing; Single Row of Balls; ABEC 1 ISO P0; No Filling Slot; No Snap Ring
Category	Angular Contact Ball Bearing
UNSPSC	31171531
Harmonized Tariff Code	8482.10.50.28
Noun	Bearing
Keyword String	Angular Contact
Manufacturer URL	http://www.consbrgs.com
Weight / LBS	69.67
d	11.024 Inch 280 Millimeter
B	2.559 Inch 65 Millimeter
D	16.535 Inch 420 Millimeter